



**India Meteorological Department
(Ministry of Earth Sciences)**

BULLETIN NO. : 05 (BOB/01/2021)

TIME OF ISSUE: 0030 HOURS IST

DATED: 03.04.2021

FROM: INDIA METEOROLOGICAL DEPARTMENT (FAX NO. 24643965/24699216/24623220)

TO: CONTROL ROOM, NDM, MINISTRY OF HOME AFFAIRS (FAX.NO. 23093750)

CONTROL ROOM NDMA (FAX.NO. 26701729)

CABINET SECRETARIAT (FAX.NO.23012284, 23018638)

PS TO HON'BLE MINISTER FOR S & T AND EARTH SCIENCES (FAX NO.23316745)

SECRETARY, MOES, (FAX NO. 24629777)

H.Q. (INTEGRATED DEFENCE STAFF AND CDS) (FAX NO. 23005137/23005147)

DIRECTOR GENERAL, DOORDARSHAN (23385843)

DIRECTOR GENERAL, AIR (23421105, 23421219)

PIB MOES (FAX NO. 23389042)

UNI (FAX NO. 23355841)

D.G. NATIONAL DISASTER RESPONSE FORCE (NDRF) (FAX NO. 26105912, 2436 3260)

DIRECTOR, PUNCTUALITY, INDIAN RAILWAYS (FAX NO. 23388503)

CHIEF SECRETARY, ANDAMAN & NICOBAR ISLANDS (FAX NO. 03192- 232656)

CHIEF SECRETARY, ANDHRA PRADESH (FAX NO. 0863-2441029, 08645-246600)

CHIEF SECRETARY, TAMIL NADU (FAX NO. 044-25672304)

CHIEF SECRETARY, PUDUCHERRY (FAX NO. 0413-2337575, 2334145)

CHIEF SECRETARY, GOVT. OF ODISHA (FAX NO. 0674 -2536660)

CHIEF SECRETARY, GOVT. OF WEST BENGAL (FAX NO. 033-22144328)

Sub: Depression over north Andaman Sea & neighbourhood

The depression over north Andaman Sea & neighbourhood moved north-northeastwards with a speed of 12 kmph during past 06 hours and lay centred at 2330 hrs IST of today, the 02nd April, 2021 near latitude 12.3°N and longitude 97.2°E, about 490 km east-northeast of Port Blair (Andaman Islands), 500 km north-northwest of Phuket (Thailand) and 500 km south-southeast of Yangon (Myanmar). It is likely to move north-northeastwards towards Myanmar coast.

Forecast track and intensity are given in the following table:

Date/Time(IST)	Position (Lat. °N/ long. °E)	Maximum sustained surface wind speed (Kmph)	Category of cyclonic disturbance
02.04.21/2330	12.3/97.2	45-55 gusting to 65	Depression
03.04.21/0530	12.5/97.3	45-55 gusting to 65	Depression
03.04.21/1730	13.3/97.5	40-50 gusting to 60	Depression

Warnings:

(i) Rainfall

- Light to moderate rainfall at many places (upto 6 cm) very likely over Andaman Islands and at a few places over Nicobar Islands during next 24 hours.

(ii) Wind warning

- Squally winds speed reaching 45-55 kmph gusting to 65 kmph very likely over Andaman Sea during next 24 hours and reduce thereafter.
- Squally winds speed reaching 30-40 kmph gusting to 50 kmph are also very likely over and around Andaman & Nicobar Islands during next 12 hours and decrease thereafter.

(iii) Sea condition

Sea condition will be rough to very rough over Andaman Sea during next 24 hours.

(iv) Impact expected:

Rough to very rough Seas and squally weather with wind speed 45-55 kmph gusting to 65 kmph, affecting small vessels and fishing operations during next 24 hours.

(v) Warnings / Advisory:

(a) Fishermen Warning

The fishermen are advised not to venture into Andaman Sea during next 24 hours.

(b) Advisory for other maritime operations

- Small ships are advised to avoid the area
- Ports along the Andaman & Nicobar Islands may take necessary pre-cautions.
- Naval base operations may maintain necessary pre-cautions
- Tourism activities may be restricted briefly over and around Andaman & Nicobar Islands.

The next bulletin will be issued at 0830 hrs IST of 03rd April, 2021.

(Shobhit Katiyar)
Scientist-C, RSMC, New Delhi

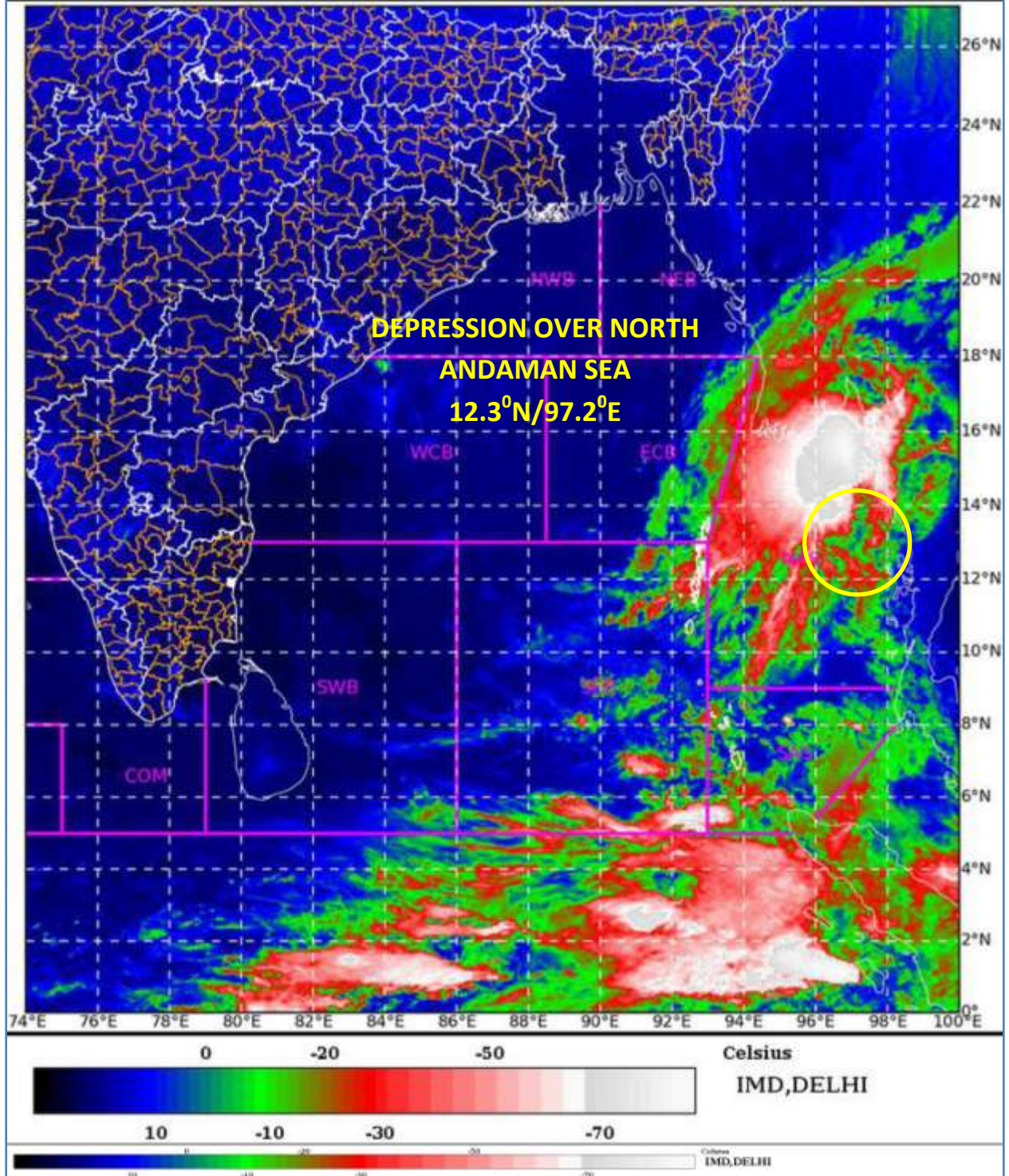
Copy to: CRS, Pune/ ACWC Kolkata/ Chennai/ CWC Bhubaneswar/CWC Visakhapatnam

SAT : INSAT-3DR IMG
IMG_TIR1_TEMP 10.8 um
L1C Mercator

02-04-2021/(1715 to 1742) GMT
02-04-2021/(2245 to 2312) IST

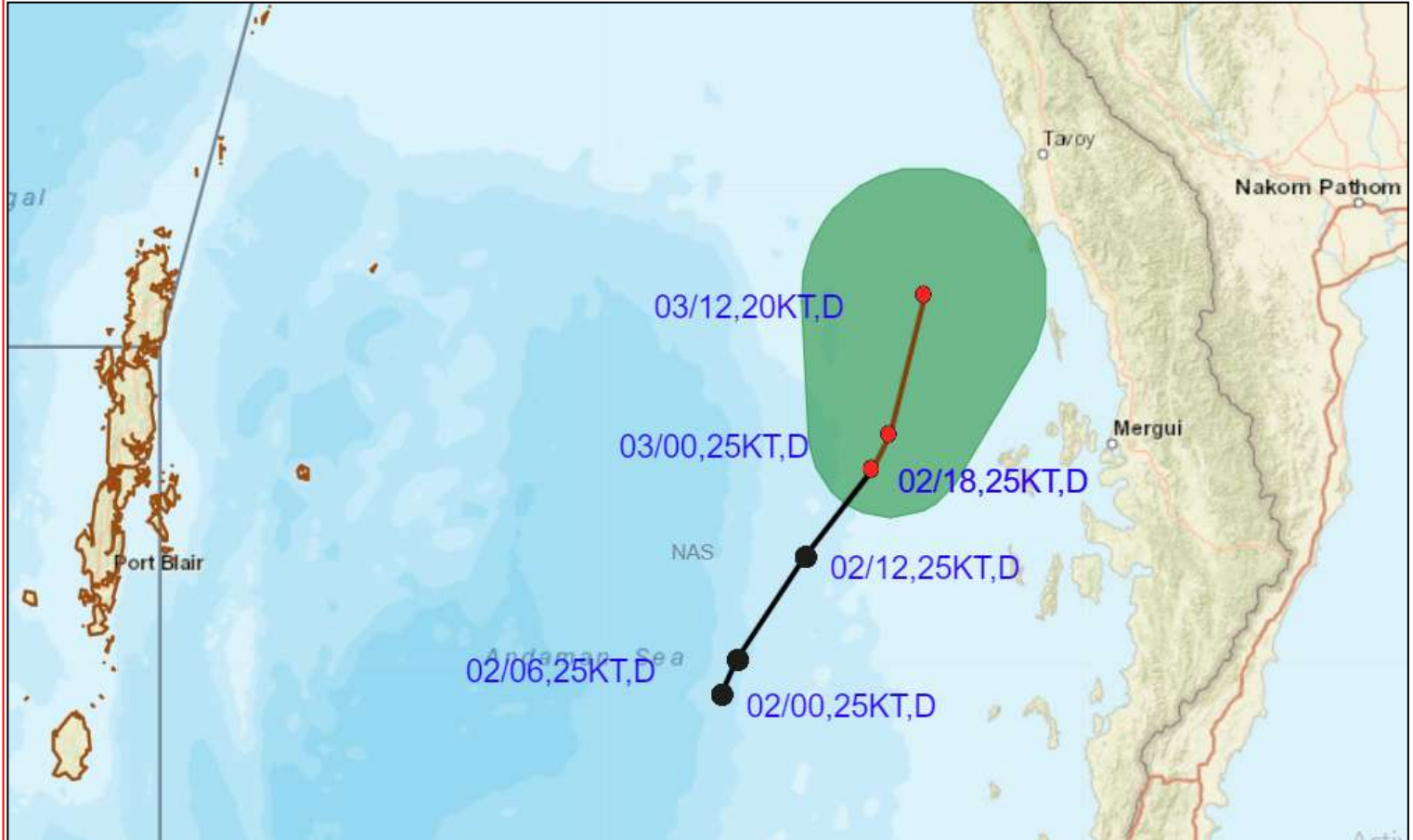


SAT : INSAT-3DR IMG 02-04-2021/(1715 to 1742) GMT
IMG_TIR1_TEMP 10.8 um 02-04-2021/(2245 to 2312) IST
L1C Mercator





OBSERVED TRACK ALONGWITH CONE OF UNCERTAINTY OF DEPRESSION OVER NORTH ANDAMAN SEA BASED ON 1800 UTC OF 2ND APRIL, 2021.



DATE/TIME IN UTC
IST=UTC + 0530
L: LOW PRESSURE AREA
WML: WELL MARKED LOW PRESSURE AREA
D: DEPRESSION (17-27 KT)
DD: DEEP DEPRESSION (28-33 KT)
CS: CYCLONIC STORM (34-47 KT)
SCS: SEVERE CYCLONIC STORM (48-63KT)
VSCS: VERY SEVERE CYCLONIC STORM (64-89 KT)
ESCS: EXTREMELY SEVERE CYCLONIC STORM (90-119 KT)
SuCS: SUPER CYCLONIC STORM (\geq 120 KT)

- LESS THAN 34 KT
- 34-47 KT
- \geq 48 KT
- OBSERVED TRACK
- FORECAST TRACK
- CONE OF UNCERTAINTY